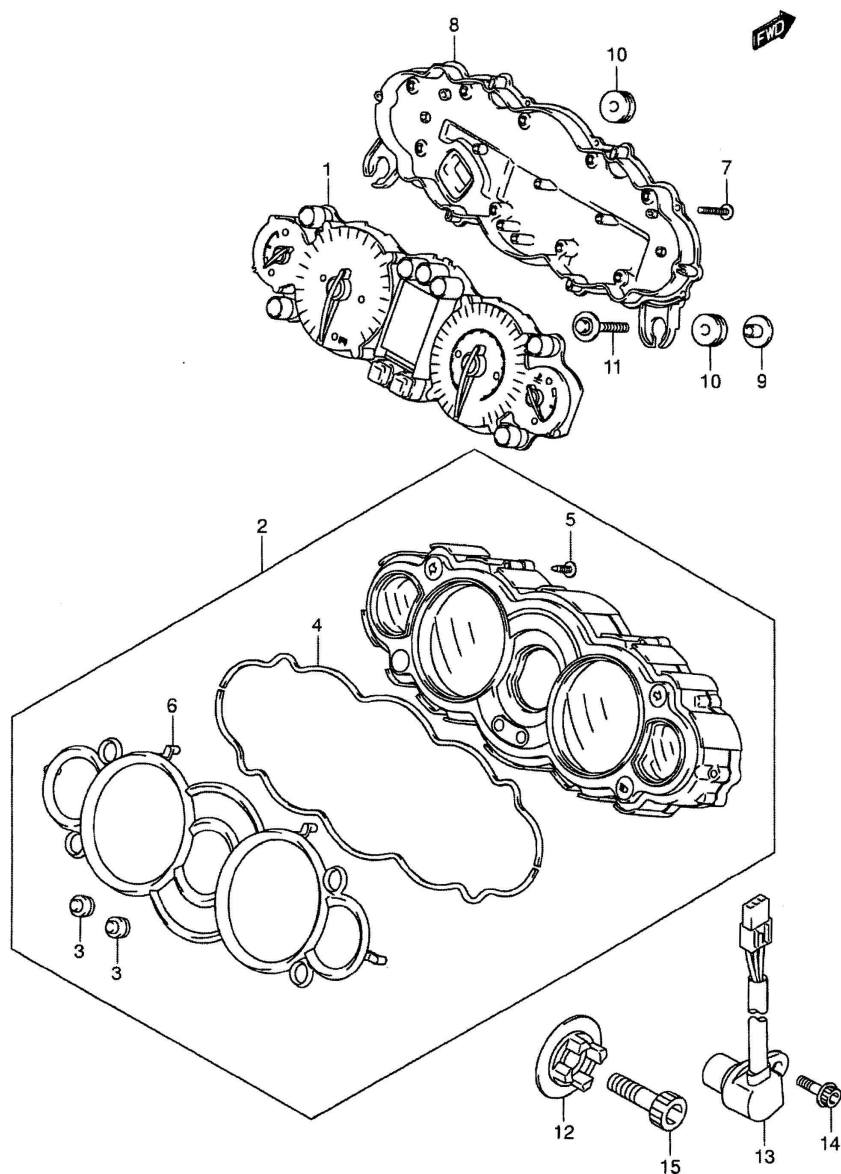


FIG. 30-1 - ABS



ABS SPEEDOMETER

Year of Constr. : 2013

Ref No	Part No	Description
1	34120-15H20	COMBINATION METER
2	34150-15H00	UPPER CASE ASSY
3	34124-39G00	SWTGH RUBBER
4	34153-15H0	PAGING
5	34183-31F10	SCREW (2.3 X 8)
6	34193-15H00	RING
7	09132-03008	SCREW (3X16)
8	34111-15H00	LOWER CASE ASSY
9	34187-24F00	WASHER, SPEEDOMETER
10	34955-13E00	CUSHION, SPEEDOMETER
11	09116-06186	BOLT (6 X 25)
12	34981-47H01	ROTOR, SPEED
13	34990-35F00	SENSOR, SPEED
14	07120-05128	BOLT
15	07130-08258	BOLT

ABS WIRING HARNESS

Year of Constr. : 2013

Ref No	Part No	Description
1	36610-15HA0	HARNESS, WIRING
2	09481-10501	.FUSE (10A)
3	09481-15501	.FUSE (15A)
4	09481-15101	.FUSE (15A)
5	36742-45G00	.HOLDER
6	36618-33E00	.BOOT, METER
7	36619-15H00	GUIDE, WIRING HARNESS
8	36620-15H00	HARNESS, WIRING NO.2
9	36857-15H00	WIRE, REAR COMB
10	09404-06429	CLAMP (L:45)
11	09404-06435	CLAMP (L:135)
12	09407-14408	CLAMP (L:120)
13	09407-14403	CLAMP (L:125)
14	09407-18402	CLAMP (L:165)
15	09407-14407	CLAMP (L:145)
16	01550-0610A	BOLT
17	36920-45G00	PROTECTOR, WIRING HARNESS
18	36855-15H10	WIRE, O ₂ SENSOR
19	36744-24F10	BRACKET, FUSE BOX
20	07120-0510B	BOLT
21	37100-15840	LOCK SET
22	37100-15H50	LOCK ASSY, STEERING
23	09139-08016	BOLT(8 X 20)
24	37180-42F30	ANTENNA ASSY, IMOBILIZER
25	01547-0530A	BOLT
26	36654-06J00	CAP,TS
27	37740-19F00	SWITCH ASSY, STOP LAMP
28	09443-06012	SPRING
29	37840-24F00	SWITCH ASSY, SIDE STAND
30	09103-08357	BOLT (8 X 35)
31	08316-1008B	NUT
32	38500-24F30	HORN ASSY
33	01550-0612B	BOLT
34	38740-26E00	RELAY ASSY. FUEL PUMP
35	38740-26E00	RELAY ASSY, FAN MOTOR
36	38741-24F00	BRACKET, FUEL PUMP RLY
37	01550-0612B	BOLT
38	37146-15H00	KEY, BLANK

FIG. 34-1 - ABS

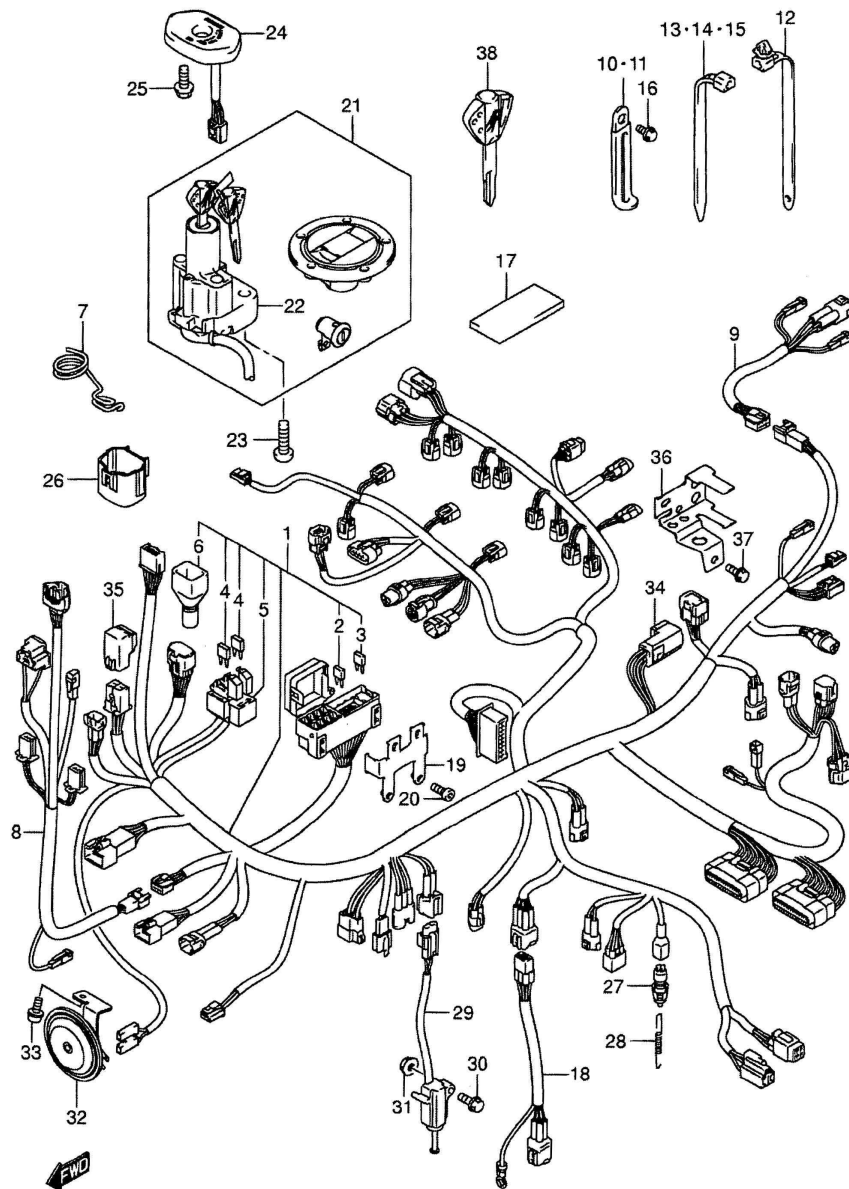
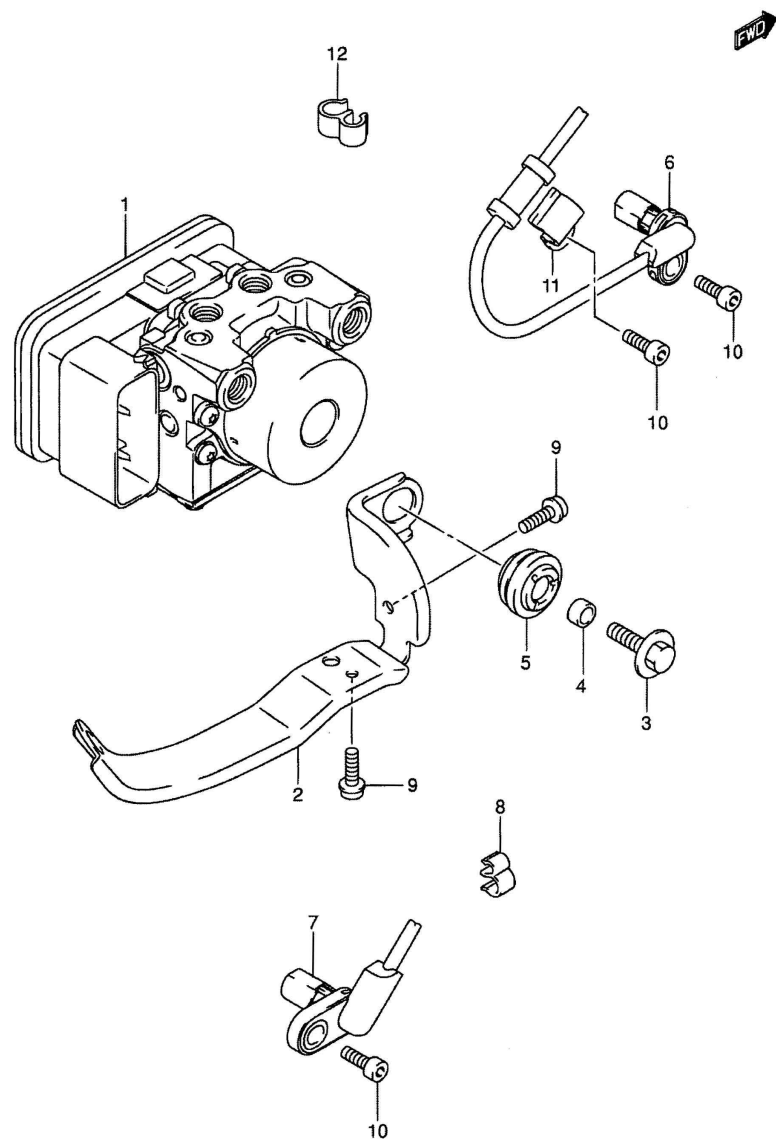


FIG. 99 - ABS

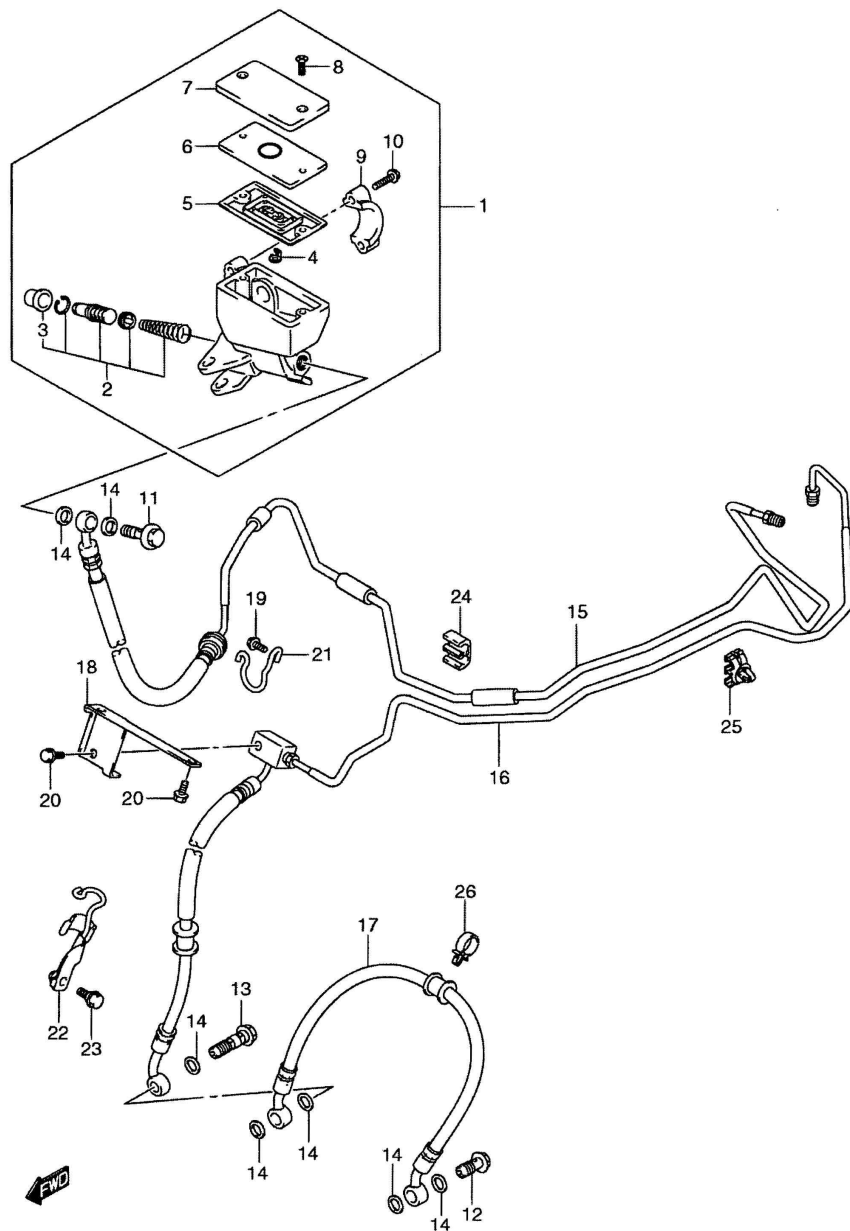


ABS HDRAULIC UNIT

Year of Constr. : 2013

Ref No	Part No	Description
1	55610-15H00	UNIT ASSY, HYDRAULIC ABS
2	55660-15H00	HOLDER, HYDRAULIC UNIT
3	55661-10G00	BOLT, HYDRAULIC UNIT MTG 2
4	55662-10G00	SPACER, HYDRAULIC UNIT 2
5	09320-10066	RUBBER 2
6	55710-15H 10	SENSOR, FRONT WHEEL ABS
7	65710-15H10	SENSOR, REAR WHEEL ABS
8	09408-00266	CLAMP 7
9	07120-0612A	BOLT 2
10	07130-0612B	BOLT 3
11	55731-23H00	CLAMP, SENSOR FRONT
12	09407-14407	CLAMP

FIG. 57-1 - ABS



ABS FRONT BRAKE HOSE & PUMP

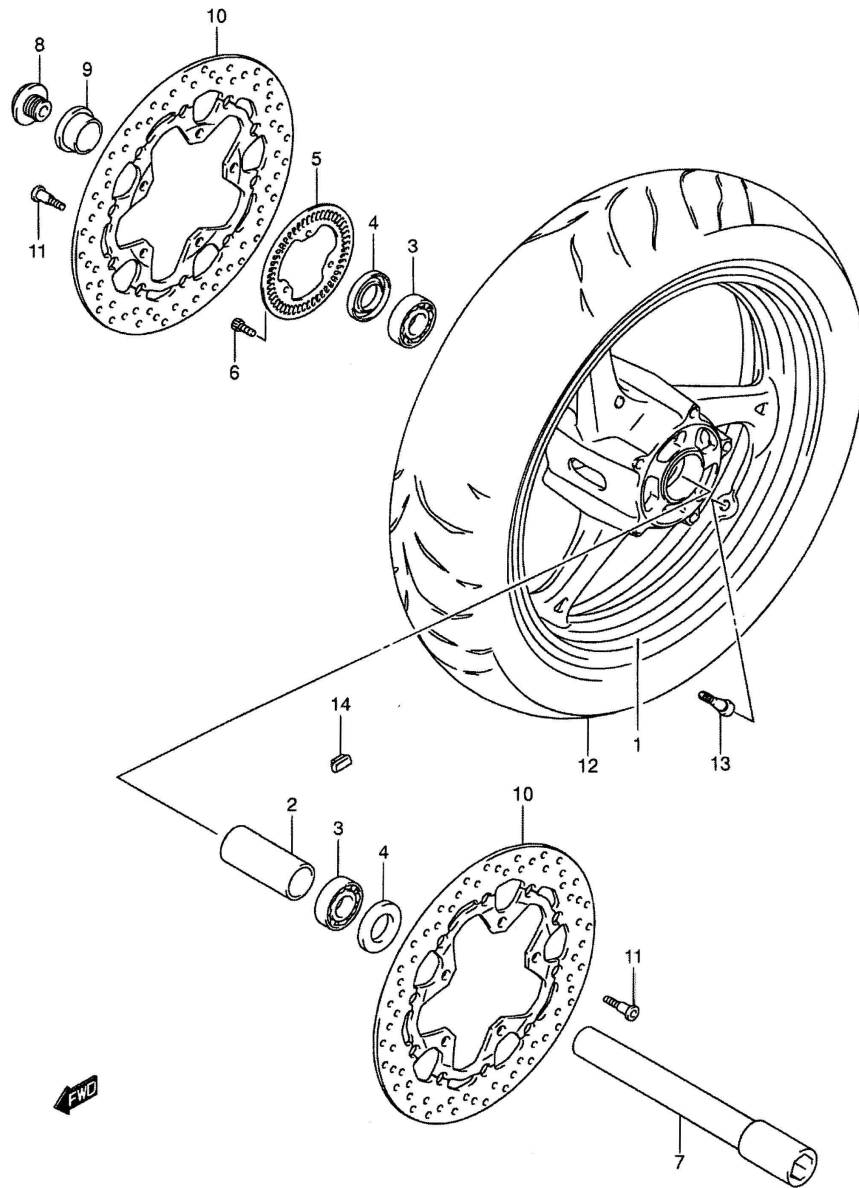
Year of Constr. : 2013

Ref No	Part No	Description
1	59600-24F10	CYLINDER ASSY, FRONT MASTER
2	59600-24810	PISTON/CUP SET
3	59666-44300	.BOOT
4	59664-48B00	.PROTECTOR
5	59667-49460	.DIAPHRAGM
6	59668-41C00	PLATE
7	59669-10G00	.CAP
8	69689-49300	SCREW 2
9	59671-36500	HOLDER
10	59675-02FA0	BOLT (6 X 22) 2
11	09360-10062	UNION
12	09360-10062	UNION LH
13	09360-10064	UNION RH
14	09161-10009	WASHER (10 X 15 X 1.5) 7
15	59200-15H00	FRONT BRAKE HOSE ASSY NO.1
16	59400-15H00	FRONT BRAKE HOSE ASSY NO.2
17	59240-15H10	FRONT BRAKE HOSE NO.3
18	59243-15H00	BRACKET, BRAKE HOSE
19	01547-0612A	BOLT
20	01547-0616A	BOLT 3
21	59245-15H00	CLAMP, BRAKE HOSE
22	59270-15H10	CLAMP, BRAKE HOSE
23	09111-06107	BOLT (6 X 12)
24	09403-06324	CLAMP
25	09403-07334	CLAMP
26	09403-16412	CLAMP

This diagram illustrates the assembly of a mechanical component, likely a valve or actuator, with various electrical and hydraulic connections. The main body (1) is shown with internal components like the piston rod (2), piston (3), and valve seat (4). It is connected to a hydraulic line (23) and an electrical line (24). The assembly includes various fasteners (screws, bolts, nuts, washers) and seals (O-rings, gaskets) to ensure proper operation and leakage prevention. The electrical line (24) terminates in a connector (33), and the hydraulic line (23) has a fitting (25). The diagram also shows a separate component (11) with internal parts (12, 13, 14) and a mounting bracket (21) with a pin (22).

ABS REAR BRAKE HOSE & PUMP		Year of Constr. : 2013
Ref No	Part No	Description
1	69600-15H00	CYLINDER ASSY, REAR MASTER
2	69600-04820	PISTON I GAP SET
3	69691-00A00	.. BOOT
4	69692-27A30	.YOKE
5	69670-27A30	.ROD, PUSH
6	69693-05A00	.NUT 2
7	69672-05A00	.CONNECTOR
8	69686-34200	O-RING
9	02112-7412A	SGREW
10	09139-06028	SGREW (6 X 20) 2
11	69740-01002	TANK ASSY, RESERVOIR
12	59667-04700	.DIAPHRAGM
13	59669-05000	.GAP
14	69689-04A00	.SCREW 2
15	01547-0612A	BOLT
16	69731-24F00	HOSE, RR RESERVOIR TANK
17	09401-13417	CLIP 2
18	09200-06068	PIN (6 X 18.2)
19	08322-0106A	WASHER
20	04111-2015A	PIN
21	69750-15H00	BRACKET, RESERVOIR TANK
22	01550-0612A	BOLT
23	69200-15H00	HOSE ASSY, REAR BRAKE NO.1
24	69400-15H00	HOSE ASSY, REAR BRAKE NO.2
25	09360-10061	UNION
26	09360-10062	UNION
27	09161-10009	WASHER (10 X 15 X 1.5)

FIG. 55-1 - ABS

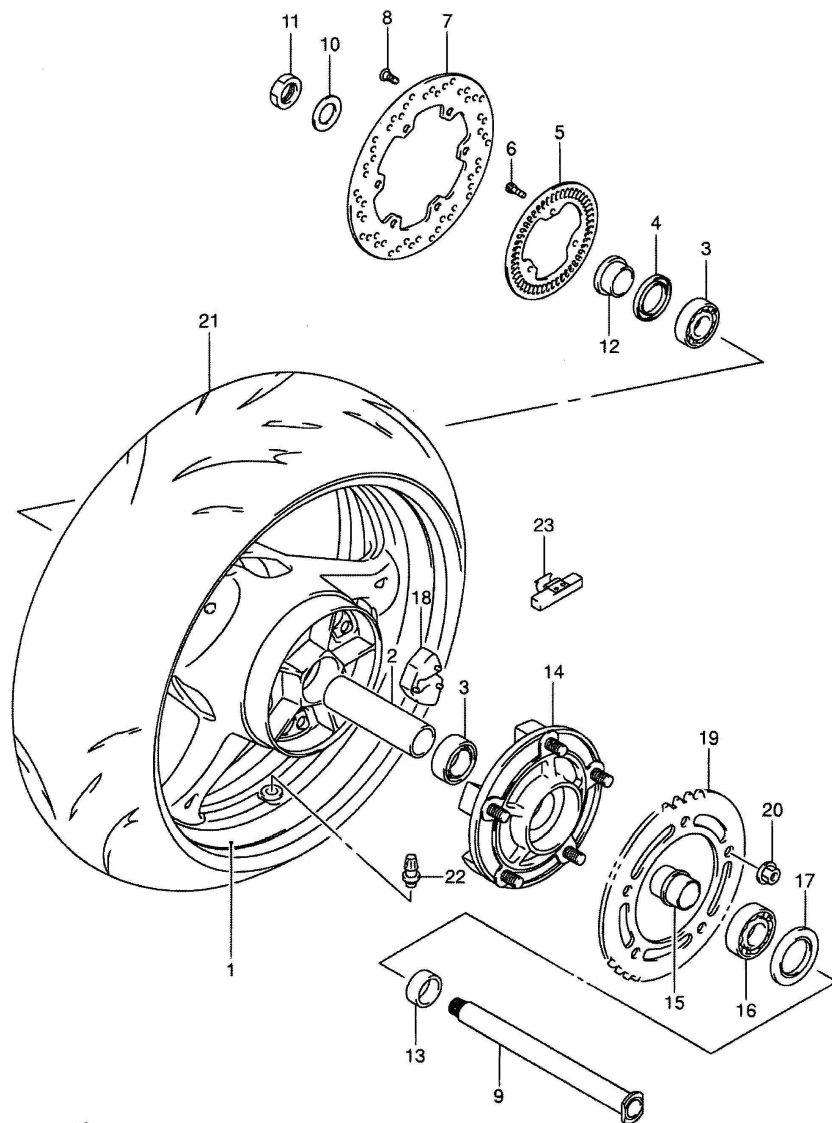


ABS FRONT WHEEL

Year of Constr. : 2013

Ref No	Part No	Description
1	54111-15H10-019	WHEEL, FRONT (BLACK) (17 M/C X MT 3.50)
2	54731-33E20	SPACER, HUB BEARING
3	09262-25167	BEARING (25 X 52 X 15)
4	09285-32004	OIL SEAL (32 X 52 X 7)
5	54162-27G00	RING, SPEED SENSOR FR (50T)
6	07130-0512A	BOLT
7	54711-15H00	AXLE, FRONT
8	54712-41G10	BOLT, FRONT AXLE
9	54751-41G10	SPACER, FRONT AXLE, RH
10	59210-15H10	DISC, FRONT BRAKE
11	09106-08160	BOLT (8 X 21)
12	55110-24F60	TIRE, FRONT (120/70 ZR17M/C (58W))
13	43130-24A00	VALVE ASSY, WHEEL RIM (TR412)
14	55411-22H00	WHEEL BALANCER, NO.1 (10G)
14	55412-22H00	WHEEL BALANCER, NO.2 (20G)
14	55413-22H00	WHEEL BALANCER, NO.3 (30G)

FIG. 61-1 - ABS

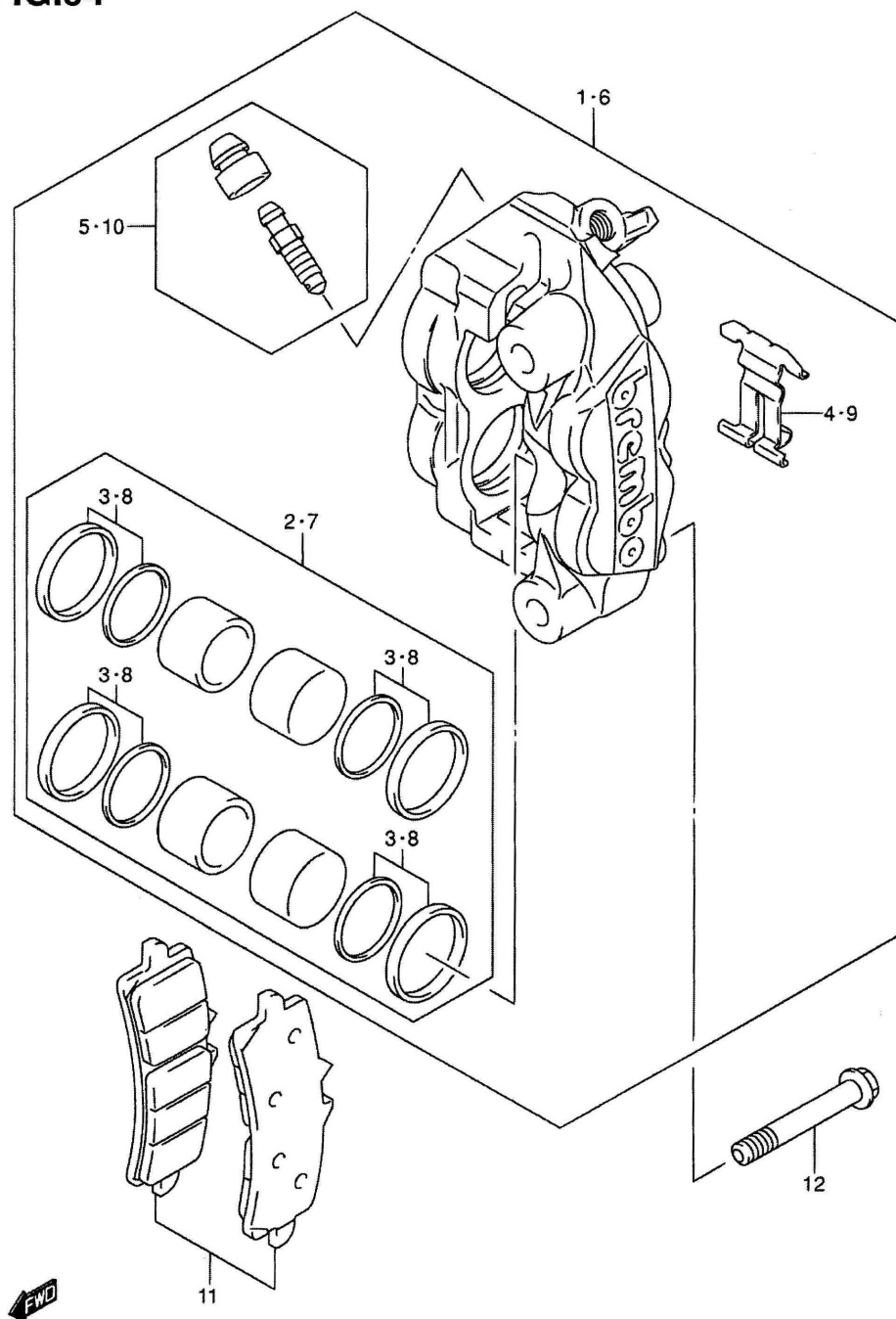


ABS RAER WHEEL

Year of Constr. : 2013

Ref No	Part No	Description
1	64111-15H10-019	WHEEL, REAR (17 M/C X MT 6.00) (BLACK)
2	64731-40F10	SPACER, HUB BEARING
3	09262-28052	BEARING (28 X 52 X 12) 2
4	09284-37001	OIL SEAL (37 X 52 X 8) RH
5	64162-23H00	RING, SPEED SENSOR (60T)
6	07130-0512A	BOLT 3
7	69211-15H00	DISC, REAR BRAKE
8	09106-08160	BOLT (8 X 21) 6
9	64711-33E20	AXLE, REAR
10	09160-25070	WASHER (25.2 X 42 X 3.2)
11	09159-25003	NUT
12	64741-35F00	SPACER, AXLE RH
13	64751-49G00	SPACER, AXLE LH
14	64610-35F30	DRUM, REARS PROCKET
15	64733-35F00	RETAINER, SPROCKET DRUM
16	09262-32022	BEARING (32 X 65 X 17)
17	09285-39001	OIL SEAL (39 X 65 X 7)
18	64651-35F20	ABSORBER, HUB SHOCK 5
19	64511-15H00	SPROCKET, REAR (NT:43)
20	08319-3110A	NUT 5
21	65110-24F50	TIRE, REAR (190/50 ZR17 (73W))
22	43130-24A00	VALVE ASSY, WHEEL RIM (TR412)
23	55411-22H00	WHEEL BALANCER, NO.1 (10G) AR
23	55412-22H00	WHEEL BALANCER, NO.2 (20G) AR
23	55413-22H00	WHEEL BALANCER, NO.3 (30G)

FIG.94



ABS FRONT CALIPER

Year of Constr. : 2013

Hersteller : BREMBO

Ref No	Part No	Description	pcs.
1	59 <u>1</u> 00-14J20-999	CALIPER ASSY, FRONT - RH	1
2	59100 -14810	,PISTON SET	1
3	59100 -14820	..SEAL SET,PISTON	1
4	59151-14J00	.SPRING	1
5	59100 -14840	.BLEEDER SET	1
6	59 <u>3</u> 00- 14J20-999	CALIPER ASSY, FRONT - LH	1
7	59100-14810	,PISTON SET	1
8	59100 -14 820	..SEAL SET,PISTON	1
9	59151-14J00	.SPRING	1
10	59100-14840	.BLEEDER SET	1
11	59100-14860	PAD SET (z.B. EBC FA 447 HH (Sinter))	2
12	09103 -10450	BOLT (10 x 1,25 x 70)	4

Hersteller : BREMBO ab Baujahr 2013